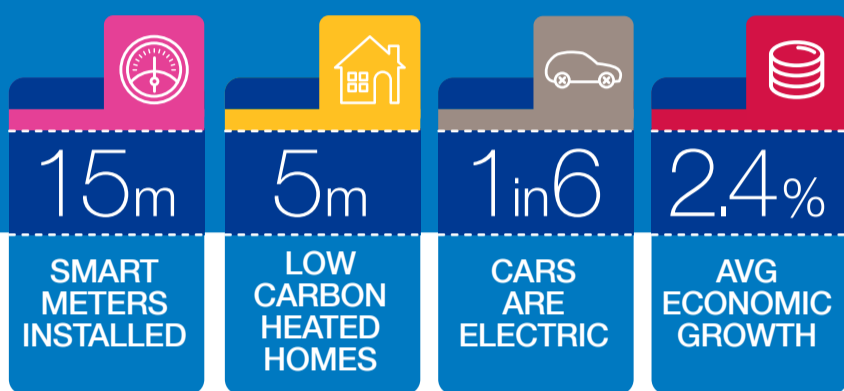


National Grid Future Energy Scenarios

Consumer Power

Consumer Power is a world of relative wealth, fast paced research and development and spending. Innovation is focused on meeting the needs of consumers, who focus on improving their quality of life with more devices and high levels of consumerism. There is a relaxed ambition towards achieving renewable targets.

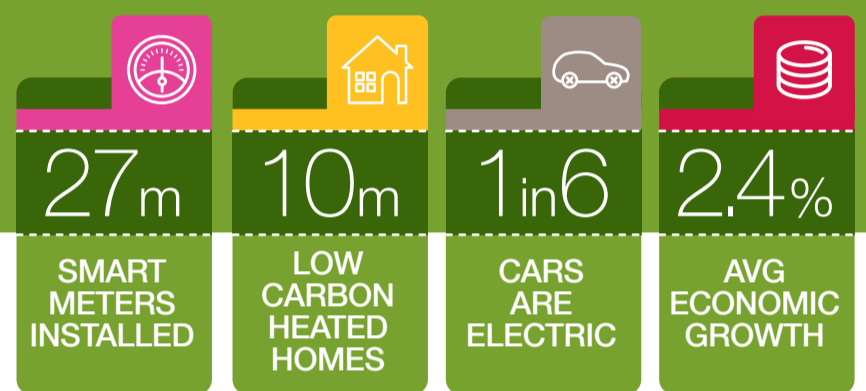
HOW THIS WOULD LOOK BY 2035



Gone Green

Gone Green is a world where green ambition is not restrained by financial limitations. It is prosperous and new technologies are introduced and embraced by society, enabling all carbon and renewable targets to be met on time.

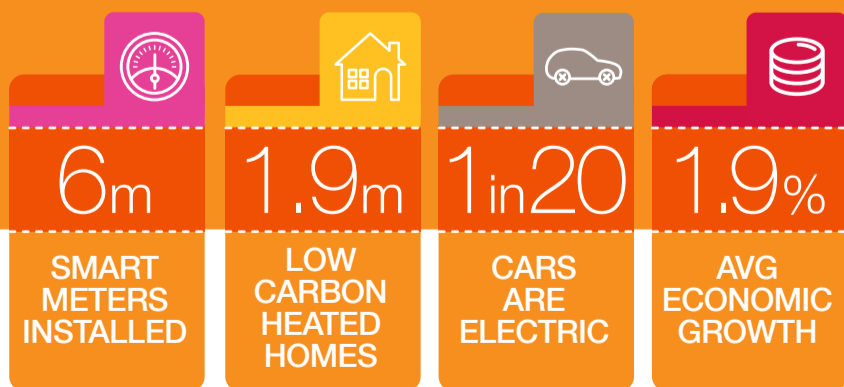
HOW THIS WOULD LOOK BY 2035



No Progression

No Progression is a world focused on achieving a secure energy supply at the lowest possible cost. With low economic growth, traditional sources of gas and electricity dominate, with little innovation affecting how we use energy.

HOW THIS WOULD LOOK BY 2035



Slow Progression

Slow Progression is a world where slower economic growth restricts market conditions. Money that is available is spent focusing on low cost long-term solutions to achieve decarbonisation, albeit it later than the target dates.

HOW THIS WOULD LOOK BY 2035

